

ORIGINAL ARTICLE

Changes in length-base demographic parameters of Yellowfin tuna (*Thunnus albacares* Bonnaterre, 1788) during two periods of time in the northern waters of the Oman Sea

Seyed Ahmadreza HASHEMI^{*1}, Mohammad DARVISHI², Mehrzad KESHAVARZIFARD³, Mastooreh DOUSTDAR⁴

¹Offshore Fisheries Research Center, Iranian Fisheries Science Research Institute, Agricultural Research, Education and Extension Organization (AREEO), Chabahar, Iran.

²Persian Gulf and Oman Sea Ecological Research Institute, Iranian Fisheries Sciences Research Institute, Agricultural Research, Education and Extension Organization (AREEO), Bandar Abbas, Iran.

³Shrimp Research Center, Iranian Fisheries Sciences Research Institute, Agricultural Research, Education and Extension Organization (AREEO), Bushehr, Iran.

⁴Iranian Fisheries Science Research Institute, Agricultural Research, Education and Extension Organization, Tehran, Iran.

Correspondence
seyedahmad91@gmail.com

Article history:
Accepted 19 May 2023

Abstract

This research looked at the basic information about *Thunnus albacares* found in the northern part of Oman's Sea, and give useful information on how correctly manage of this resource. During the years of this study (1992 and 2022), over 6000 fish were measured and the average length (range) of Yellowfin tuna fish in 1992 and 2022 was 93 ± 26 (21-157) cm and 77 ± 18 (24-175) cm, respectively. The average weight (range) of this species was 9127 ± 1251 (3500-55000) grams in 1992 and 10639 ± 1450 (1100-85000) grams in 2022. The relationship between fork length and total body weight for the year 1992, $W=0.014\times L^{2.51}$ ($R^2=0.83$, $N=750$) and the year 2022, $W=0.019\times L^{2.46}$ ($R^2=0.89$, $N=703$) was obtained. Vonbertalanffy equation for this species in the northern waters of the Oman Sea (Iran) was calculated in 1992 and 2022 respectively as: $L_t= 182(1-\exp(-0.39(t+0.25)))$ and $L_t= 177(1-\exp(-0.55(t+0.18)))$. The ratio of spawning potential based on length (LBSPR) in 1992 and 2022 were 0.22 (0.20-0.25) and 0.10 (0.09-0.12), respectively. Based on ratio of $P_{\text{mega}} < 0.1$, $L_{\text{mean}}/L_{\text{opt}} < 1$ and $L_{\text{mean}}/L_{F=M} < 1$ show considered undesirable. Decrease of the average length, LBSPR index and increase of fishing and total mortality can be a reason for overfishing. The present study showed that the Yellowfin tuna stock has reached 'overfished' status. The findings of this study can assist management and sustainable harvest of this species stocks.

Keywords: Overfishing, Spawning potential ratio, Vonbertalanffy equation, Sustainable harvest.

INTRODUCTION

Only a small percentage of fisheries in the world (about 11%) are evaluated using advanced models to better understand their status and sustainability (FAO 2019). Due to more and more fishing effort around the world, with changes in the ocean's climate and environment, the availability of fish and these resources fluctuated and their harvest has been changing year to year (Shi et al. 2022).

Out of all the animal resources we use, fisheries resources are the biggest. The size, behavior, and ability of fish populations to recover from changes create difficulties in their assessment and management. The fishery populations are special for at least three reasons (Vivekanandan 2005). (i) Many species can spread out spatial dissemination. (ii) Numerous species show wide temporal variations in abundance. (iii) Since the resources cannot be seen

visually and function of the resources is a challenge (Vivekanandan 2005). Stock assessment is the method of gathering and reviewing data on fish populations to determine changes in the abundance of fishery stocks. It also tries to predict what might happen to the fish population in the future (Vivekanandan, 2005). Tuna is a type of fish that belongs to the Perciformes group and the Scombridae family. This family has 54 different kinds of creatures and 15 groups. The *Thunnus* genus has 8 species that some of them live in the Persian Gulf and the Oman Sea (Froese & Pauly 2022). Yellowfin tuna is a fish that moves around in warm areas of the oceans like the Pacific, Atlantic and Indian oceans. This kind of animal ordinarily found within the water up to 250 meters deep, but usually only up to 100 meters. The older ones usually swim farther out to sea than the younger ones. Their favorite temperature is between 15 to 31 degrees Celsius. They



Fig.1. Location of *T. albacares* sampling stations in the northern waters of the Oman Sea, Iran.

can grow up to 239 cm (but usually around 150 cm), and can weigh up to 200 kg. They usually live up to 9 years old (Collette & Nauen, 1983). This type of fish called tuna is very important for fishing in warm ocean areas. It is the 4th biggest kind of fish caught for food in the world, near 1.6 million tons caught in 2020 (two percent of the world's total marine catch in 2020). Indonesia has the largest catch of this species (FAO 2022).

Many researchers have studied this species around the world (John and Reddy, 1989; Chantawong 1998; Kaymaram et al. 2000; Tantivala 2000; Somvanshi et al. 2003; Prathibha et al. 2012; Ramalingam et al. 2012; Kaymaram et al. 2014; Nurdin et al. 2016; Haruna et al. 2018; Hashemi et al. 2020; Hashemi et al. 2022). This research looked at the basic information about Yellowfin tuna found in the northern part of Oman's Sea. This study aimed to give useful information on how correctly manage of this resource. This investigation was done to learn more about a type of animal that has been caught and to understand how it changes and grows.

MATERIALS AND METHODS

Five places were chosen to study *T. albacares*, because a lot of this fish catch in these areas of the northern waters of the Oman Sea. There are ports of Beris (61°10' E, 28°82' N), Ramin (60°45' E, 25°15' N), Pozm (60°28' E, 25° 14' N), Konarak (60°28'E, 25°60'N) and Jask (57°77' E, 25° 64'N) (Fig. 1). The

Iranian Fisheries Organization collected information about how much of this type of fish was caught each year from 1997 to 2022. This is called the landings data. The information was published in 2023 (IFO 2023).

Length Frequency Distribution: Fish were collected every month from fish landing local of Beris, Ramin, Pozm, Konarak, and Jask. From the fish caught in these ports just 1992 and 2022, samples were taken randomly to study them. Fish length measured over 6000 samples (3700 samples in 1992 and 2700 samples in 2022) using biometric analysis.

Biometry: Biometric measurements (Fork-length and total weight) were performed. Fork length was measured using a ruler with 1 cm accuracy and wet weight by the close to 10g. The Equation (1) was used to calculate relationship between the fork length and weight, with, W_i is the total weight (g), L_i , the fork length (mm), a is regression constant (intercept) and b is the regression slope (fish growth rate) (Biswas 1993).

$$W_i = a \times L_i^b \quad (1)$$

In order to verify if calculated b was significantly different from 3, the t-test was employed using the statistic: $t_s = (b-3) / S_b$, where S_b is the standard error of the slope (Zar 1996).

Growth Studies: The estimation of L_∞ was used by math equation that called the Froese and Binohlan equation, $\log L_\infty = 0.044 + 0.9841 \times \log(L_{max})$ (Froese & Binohlan 2000). The growth rate evaluated by using

a computer program called Electronic Length Frequency Analysis (ELEFAN) method with optimization model, RStudio (1.1.46 Version) software, and TropFishR package (Mildenberger et al. 2017).

The best value of t_0 calculated by special equation called Pauly's equation, $(\text{Log}(-t_0) = -0.3922 - 0.2752 \text{Log} L_\infty - 1.038 \text{Log} K)$ (Froese & Binohlan 2000). The fish grow compared by measuring two factors, their maximum length (L_∞) and growth parameter (K), which the formula called as: $\Phi' = \text{Log}(K) + 2\text{Log}(L_\infty)$.

Mortality Estimate: The natural mortality rate (M) is evaluated using the empirical formula (Then et al. 2015): $M = 4.118 \times K^{0.73} \times L_\infty^{-0.33}$

L_∞ is fish infinite length (cm), K is growth curve parameter of von Bertalanffy equation.

Total mortality (Z) found out using data from the length - converted catch curves. The fishing mortality (F) was estimated using the relationship $F = Z - M$. The fishing mortality (F) of Maximum sustainable yield (MSY) were determined Using the formula $F_{MSY} = M$ (Zhou et al. 2017). The exploitation rate (E) was the ratio of fishing mortality (F) to total mortality, which was calculated using the formula $E = F/Z$ (Sparre & Venema 1998).

Length-based reference point (LBRP): Length-based reference point (LBRP) suggests using three different measurements: percentage of mature fish in the catch (P_{mat}), percentage of fish caught at the optimum length for harvest (P_{opt}), and percentage of mega-spawners (length between $1.1 L_{opt}$ and L_{max} on the catch length composition) in the catch (P_{mega}). These three measurements are all combined to give an overall score called the P_{obj} value, which can help to understand fishing status (Cope & Punt 2009). Length at maturity (L_{mat}) of *T. albacares* was 76 cm in the northern part of the Oman Sea near Iran, according to Keymaram et al. (2009).

The optimal fishing length (called $L_{F=M}$) calculated using some calculations as follows (Cousido-Rocha et al. 2022):

$$L_{opt} = L_{inf} (3 / (3 + MK))$$

$$L_{F=M} = (0.75 L_c + 0.25 L_{inf})$$

$$P_{mega} = L_{opt} + \%10$$

Length-based Spawning Potential Ratio (LBSPR):

LBSPR is one of the biological reference points for determining the stock status. The reference points of LBSPR has two important points: LBSPR 20% is as limit reference point and LBSPR 40% is a target reference point (Hordyk et al., 2015). The SPR was described by Hordyk et al. (2015):

$$LBSPR = \frac{\sum_{(1-L_x)^{(M/K)[(F/M)+1]} L_x^b}{\sum_{(1-L_x)^{M/K} L_x^b}}, \text{ Where: } L_x, M, K,$$

F are fork length; natural mortality; growth rate; fishing mortality, respectively. The SPR were determined using the simple assumptions of asymptotic or logistic selectivity functions, with this assumption that the fish catch only in certain sizes and not considered age differences. The F/M ratio can be estimated from the length composition of the catch (Hordyk et al., 2015). The connection between F/M and SPR is asymptotic and based on the selectivity parameters (Carruthers & Hordyk 2018).

Stock status: The Stock status of *T. albacares* were also evaluated. For this purpose, at first exploitation rate (U) was estimated using the equation given by Beverton & Holt (1957) as $U = F(1 - e^{-z})/Z$. To estimate the annual catch ($Y_{1992} = 14000$ t, $Y_{2022} = 44000$ t), the landing data of Yellowfin tuna were collected from Iran Fisheries Organization (IFO 2023). Then by using the values of U , Initial biomass or virgin biomass ($K = B_v = Y/U$), average standing stock ($B_t = Y/F$; Pillai et al. 2000) and biomass of Maximum sustainable yield (MSY) ($B_{MSY} = K/2$) were determined (Zhou et al. 2017).

Statistical analyses: Comparison of population dynamic, lengths and weights value in different of years were tested by independent t -test. Data analyses were performed using R (4.3.0), R Studio software (2023. 06.0) with the TropFishR and LBSPR packages.

RESULTS

Length frequency distribution: The mean \pm standard deviation of fork length (L) and total weight (W) for 1992 (3700 specimens) and 2022 (2600 specimens)

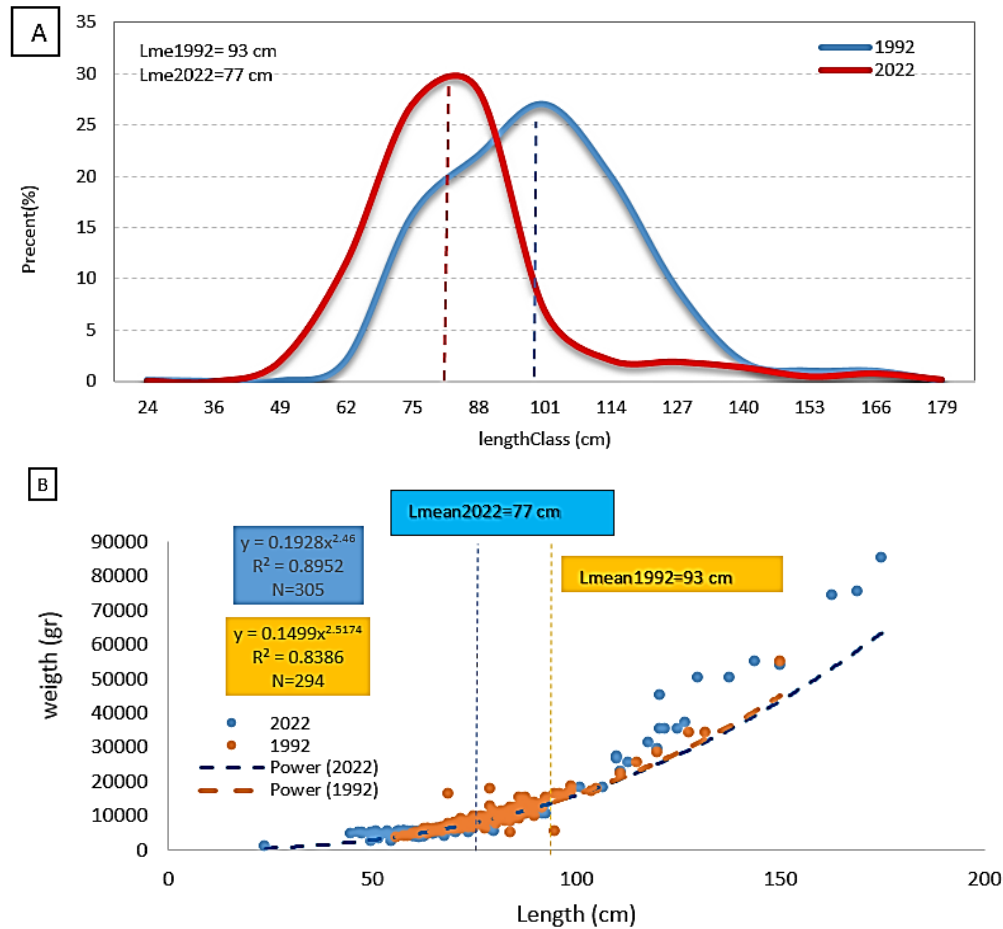


Fig.2. Length and percentage frequency in different length categories (A) and Length-weight relationship (B) of *T. albacares* in the northern waters of the Oman Sea.

were 93 ± 26 (21-157) cm, 77 ± 18 (24-175) mm respectively, and, 9127 ± 1251 (3500-55000) g, 10639 ± 1450 (1100-85000) g respectively. The differences between length and weight in both years were significant ($t = 29.76$, $P < 0.05$), ($t = 38.39$, $P < 0.05$) respectively). The length (TL) data were categorized into 13-cm groups which the highest frequency, have a place with 88 to 101cm length (1992) and 75 to 88cm length (2022) (Fig. 2).

Length-weight relationship (LWR): The relationship between length and weight was calculated for two years by following Equation (1) and give $a=0.14$ and $b= 2.51$ ($R^2=0.83$) for 1992, and for 2022, $a= 0.19$ and $b= 2.46$ ($R^2= 0.89$). The student t -test has shown significant differences between estimated b and $b= 3$ at the level of 0.05 (Fig. 2), which means allometric growth pattern (negative) for *T. albacares* in the northern part of the Oman Sea. The LWR of *T. albacares* fish shows that in similar length groups,

have less weight in 2022 compared to 1992.

Population dynamic parameters: Table 1 shows population dynamic parameters of Yellowfin tuna in 1992 and 2022. Growth parameters for 1992 and 2022 were estimated, as $L_{\infty}= 182$ cm, $K= 0.39$ (yr^{-1}), $t_0= -0.25$ and $L_{\infty}= 177$ cm, $K= 0.55$ (yr^{-1}), $t_0= -0.18$, respectively. The growth curve (Figure 3), indicated 6 cohorts (age groups) and the growth performance index was estimated as $\Phi= 4.11$ and 4.21 for 1992 and 2022, respectively. Based on the results, the maximum lifespan of this species was near 7.7 to 5.5 years, respectively. The natural mortality (M), fishing mortality (F) and total mortality (Z) were estimated as 0.56, 0.49 (yr^{-1}), 1.28, 1.92 (yr^{-1}), and 1.94, 2.41 (yr^{-1}) for 1992 and 2022, respectively (Table 1). The exploitation coefficient was estimated as 0.7 and 0.8 (yr^{-1}), respectively.

Length-based indicators (LBI) and Length-based Spawning Potential Ratio (LBSPR): The length-based

Table 1. Comparison of population dynamics values of *T. albacares* in two years (1992-2022) in the northern waters of the Oman Sea. (L_{∞} = infinite length, K= Growth rate, t_0 = time that length is zero, M= Natural mortality, F= Fishing mortality, Z= Total mortality, E= Exploitation rate, F_{MSY} =Fishing mortality of Maximum sustainable yield (MSY), B_{MSY} = Biomass of Maximum sustainable yield (MSY), B_v = Initial biomass or virgin biomass, LBSPR= Length-based Spawning Potential Ratio).

Year	L_{∞} (cm)	K (yr^{-1})	t_0	Φ	M (yr^{-1})	F (yr^{-1})	Z (yr^{-1})	U	E	F/ F_{MSY}	B/B_{MSY}	B/ B_v	LBSPR
1992	182	0.39	-0.25	4.11	0.56	1.28	1.94	0.56	0.7	2.28	0.87	0.43	0.22
2022	177	0.55	-0.18	4.21	0.49	1.92	2.41	0.72	0.8	3.91	0.75	0.37	0.10

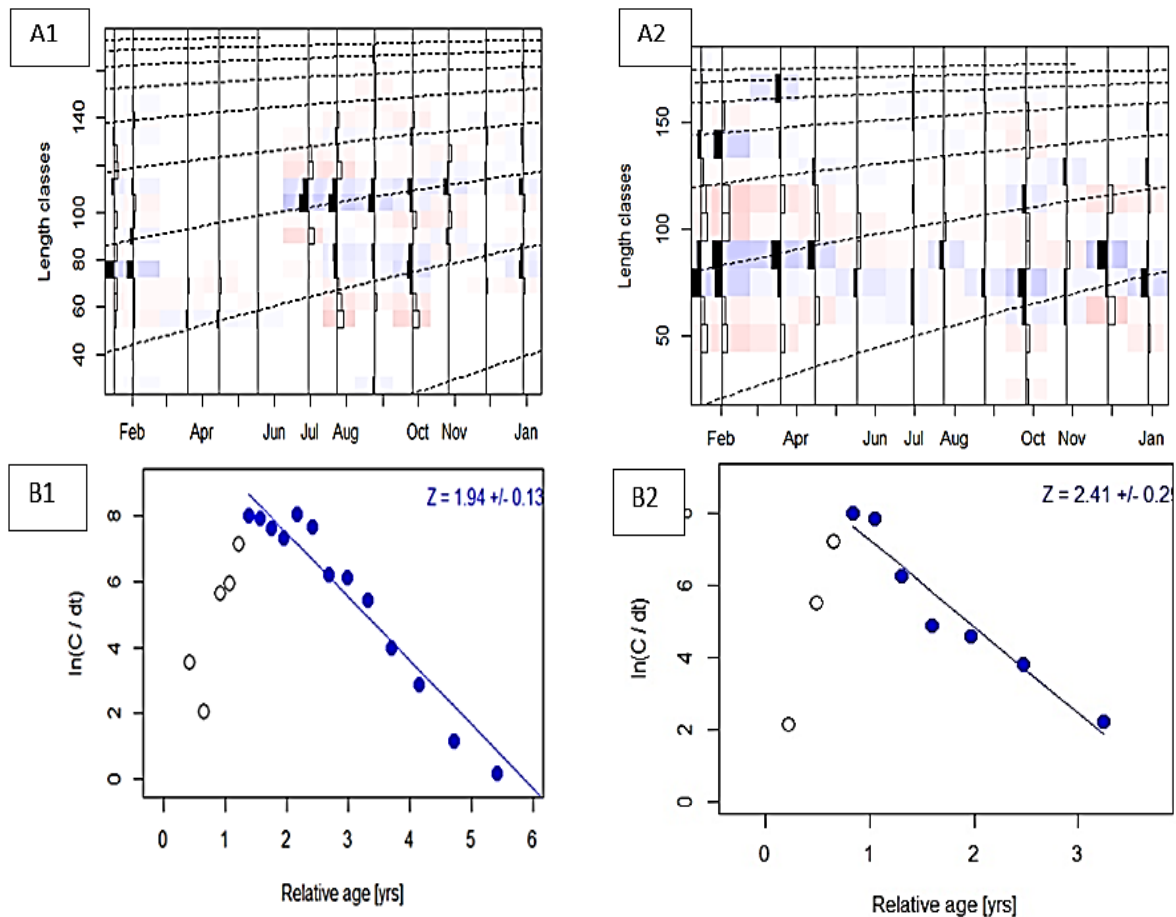


Fig.3. Growth curve derived from the structure of population (A1= 1992, A2= 2022) and exploitation coefficient curve (B1= 1992, B2= 2022) of *T. albacares* in the northern waters of the Oman Sea.

reference point is the percentage of fish that are caught at the best length for harvesting ($L_{opt}= 123\text{mm}$, $P_{opt}= 0.009$), ($L_{opt}=132\text{mm}$, $P_{opt}= 0.01$) and ($L_{F=M}= 100\text{mm}$, $P_{F=M}= 0.47$), ($L_{F=M}= 91\text{mm}$, $P_{F=M}= 0.14$). The percentage of mega-spawners in the catch is also measured for 1992 and 2022 this species ($L_{mega}= 132\text{cm}$, $P_{mega}= 0.009$), $L_{mega}=145\text{ cm}$, $P_{mega}= 0.01$), respectively.

The ratios of P_{mega} less than 0.1, L_{mean}/L_{opt} less than

1 and $L_{mean}/L_{F=M}$ less than 1 were estimated. The ratio of spawning potential based on length (LBSPR) in 1992 and 2022 were 0.22 (0.20-0.25) and 0.10 (0.09-0.12), respectively (Table 1 and Fig. 5). In 1992, only 18% of the samples were lower than mature length, and in 2022, this number increased to about 42%. It value showed a significant difference for 1992 and 2022 ($t= 94$, $P < 0.05$). The value of infinite length, average length, and maximum length of 2022 shows a significant decrease compared to 1992 ($P < 0.05$, Fig.

4). Also, the optimal length (L_{opt}) shows a significant increase in this period of time ($t= 35$. $P<0.05$).

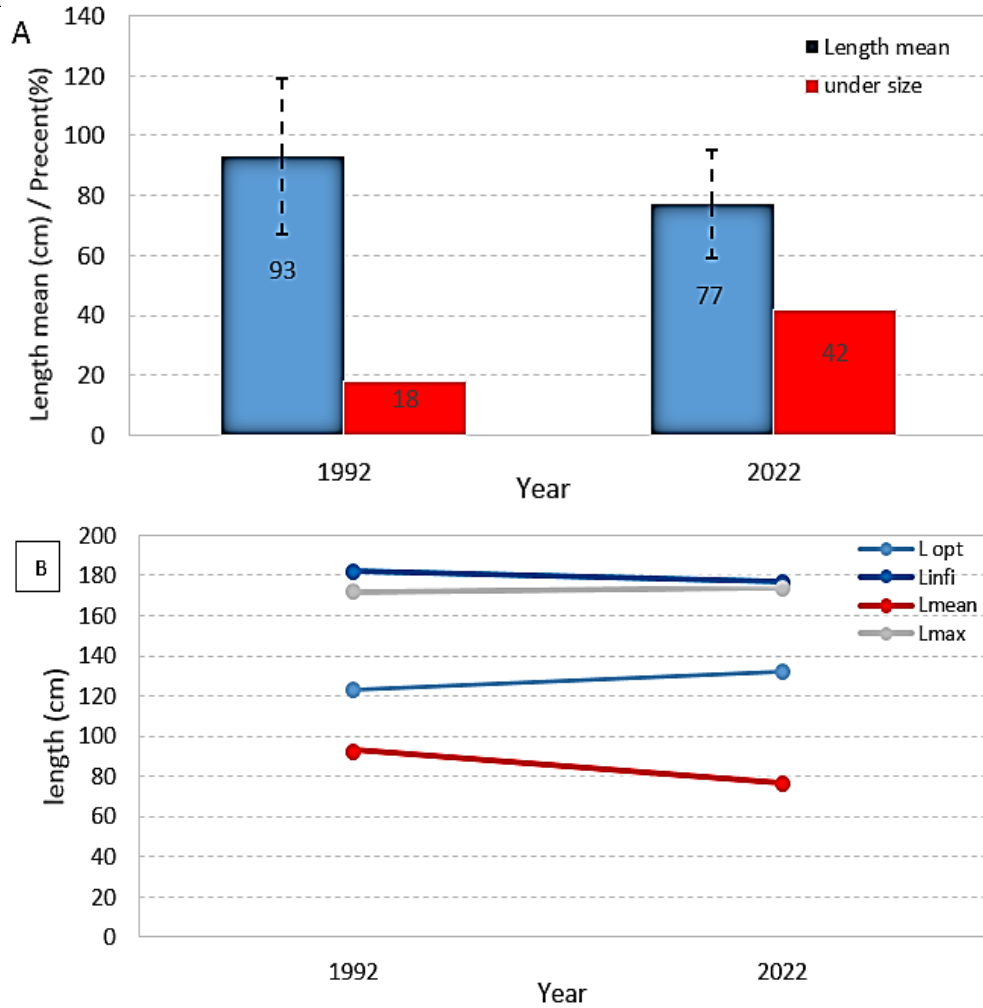


Fig.4. Length mean and under size percent (A) and length-based reference point (B) in two years (1992-2022) of *T. albacares* in the northern waters of the Oman Sea.

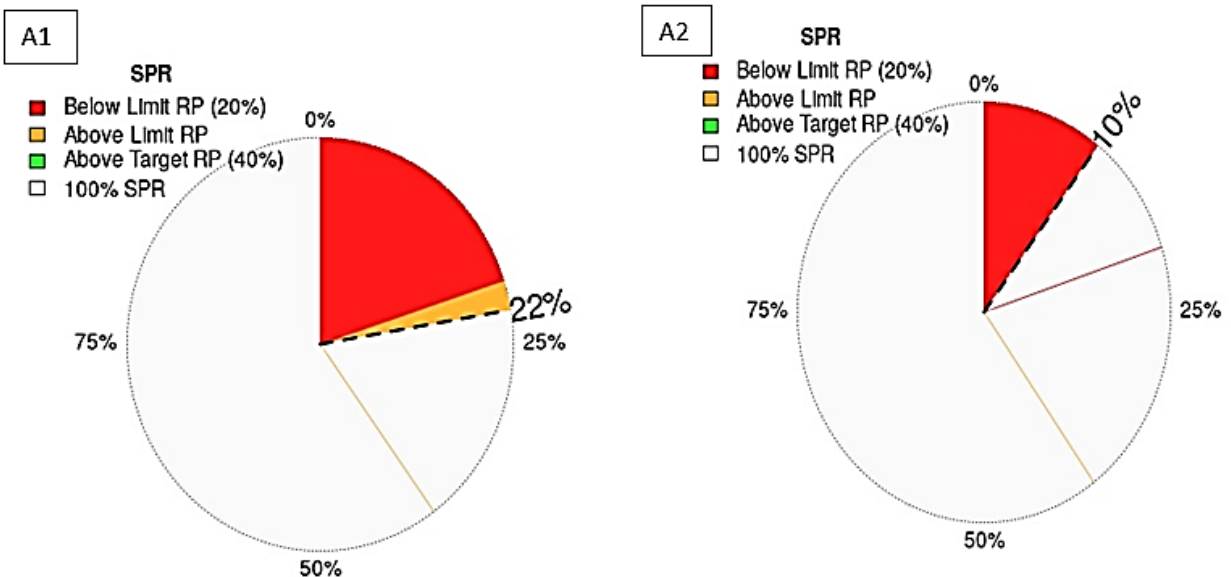


Fig.5. The LBSPR (A1= 1992, A2= 2022) value of *T. albacares* in the northern waters of the Oman Sea.

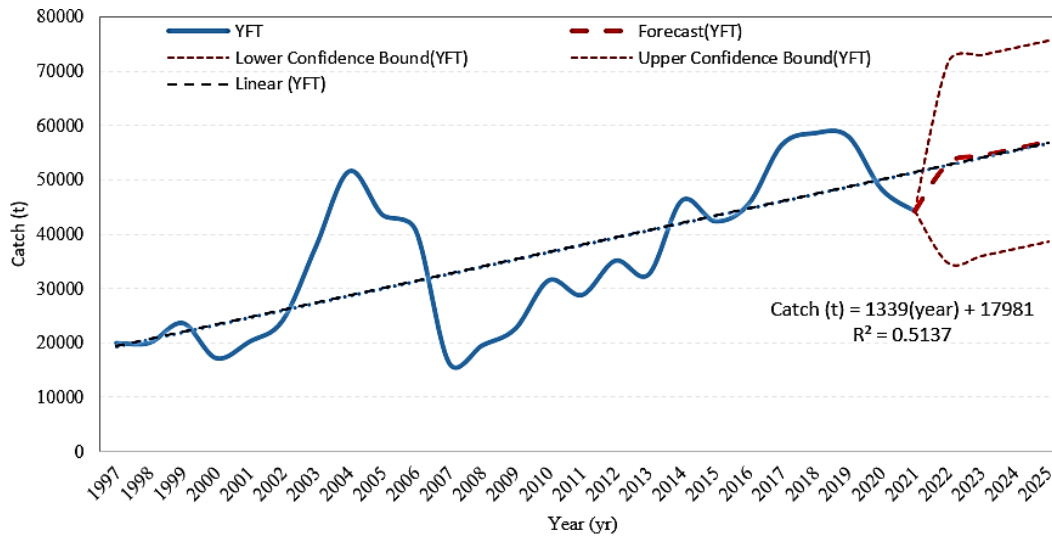


Fig.5. The catch value of *T. albacares* in the northern waters of the Oman Sea.

Stock status: Initial biomass or virgin biomass ($K_{1992} \sim 25000$ t, $K_{2022} \sim 61000$ t), average standing stock ($B_{1992} \sim 10900$ t, $B_{2022} \sim 22900$ t) and biomass of MSY ($B_{MSY1992} \sim 12500$ t, $B_{MSY2022} \sim 30500$ t) of *T. albacares* for different years (1992 and 2022) were estimated. The F/F_{MSY} , B/B_{MSY} and B/B_v values are shown in Table 1.

DISCUSSION

T. albacares is an important fish in the southern part of Iran. In recent years, there has been more of this fish caught in the northern area of the Oman Sea in Iran. Over 44,000 tons of this fish have been caught in the South of Iran's waters (Fig. 6). The majority, more than 89 percent, of this fish catch is from the northern Oman Sea, Sistan and Baluchistan Province (IFO 2023). Based on the linear average of catch of Yellowfin tuna, forecast shows an increase until 2025, in the northern waters of the Oman Sea, Iran (Fig. 6).

Population dynamic of Yellowfin tuna: The biological characteristics of this species were compared with other studies from different parts of the world. The comparison results are shown in Table 3. It appears that the Yellowfin tuna in the Oman Sea regions are smaller compared to the Yellowfin tuna in the east coast of India, Indonesia, and the Arabian Sea regions. It is expected that this species grows more in tropical regions than subtropical regions and its reasons are the temperature difference and its ecological conditions.

The estimate for the L_∞ of yellowfin tuna in this study is lower than the one given by Kaymaram et al. (2000) and (2014). The K estimate was found to be higher than the estimate provided by Kaymaram et al. (2000) and (2014), and it can be for various reasons. One possible reason might be due to overfishing, or it could be because the method used to collect samples. The differences in amounts of the infinite length and growth rate are affected by the differences in the environment in each area (King 2007). Usually, regions can have different lengths and growth rates due to the amount and quality of food and the weather conditions (Bartulovic et al. 2004). Various factors can impact fish grow such as their age, sex, season, year, type of feeding, physiological conditions, availability of food resources and reproductive time (Lalèyè 2006). The amount of fish in an area is affected by various things like the weather, the conditions of the ocean, and the relationship between the fish and their predators (Vivekanandan 2005; Hashemi et al. 2021; Hashemi et al. 2022; Hashemi & Doustdar 2022).

The Growth performance index (Φ') was measured to be 4.21, which is similar to other study conducted by Kaymaram et al. (2014), Haruna et al. 2018; this information could be found in Table 2. The reason for comparing Φ' values of the growth curve is because there is a connection between infinite length and growth rate, and this index has constant changes

Table 2. Comparison of biological characteristics of *T. albacares* with other studies around Indian Ocean.

References	Region	L_{∞} (cm)	K (yr ⁻¹)	t_0	Φ'	A (yr)	M	F	Z	E
Maldeniya & Joseph (1986)	Sri Lanka	178	0.47	-0.2	-	6.3	-	-	-	-
Anonymous (1987)	Sumatra	175	0.5	-	-	-	-	-	-	-
John & Reddy (1989)	West coast of India	175	0.29	-	-	10.3	0.74	-	-	-
Chantawong, (1998)	East coast of India	194	0.66	-0.27	-	11.3	-	-	-	-
Tantivala (2000)	East coast of India	185	0.34	0.003	-	-	-	-	-	-
Kaymaram et al. (2000)	Oman Sea (Iran)	189	0.42	-0.23	-	-	0.6	-	-	-
Somvanshi et al. (2003)	The Arabian Sea	193	0.2	-	-	-	-	-	-	-
Ramalingam et al. (2012)	Nicobar Sea (India)	173	0.39	-0.09	-	7.6	0.51	-	-	-
Prathibha et al. (2012)	East coast of India	197	0.3	-0.11	-	10.1	0.48	0.23	0.71	0.32
Kaymaram et al. (2014)	Oman Sea (Iran)	183	0.45	-0.18	4.21	6.5	0.48	1.56	2.04	0.76
Nurdin <i>et al.</i> , 2016	Indonesia (Palabuhanratu waters, west Java)	178	0.47	-	4.17	-	0.61	0.66	1.27	0.48
Haruna et al. (2018)	Indonesia (Banda Sea)	215	0.31	-0.31	4.21	9.37	0.49	0.98	1.47	0.67
Hashemi et al. (2020)	Oman Sea (Iran)	171	0.54	-0.18	4.19	5.38	0.71	1.57	2.28	0.68
Present study	Oman Sea (Iran)	177	0.55	-0.18	4.21	5.5	0.49	1.92	2.41	0.8

at different times and in different sizes. Changes in the environment and location can impact infinite length and growth rate. These differences include different values of Φ' and can also vary within one area in different time periods because changing environmental conditions (King 2007).

The value of indices of exploitation coefficient and exploitation rate in the population must be less than 0.5 or fishing mortality should not be more natural mortality. These indices indicate overfishing (Sparre & Venema 1998; King 2007).

Other past studies on this species in the Indian Ocean have shown the amount of natural mortality (M) in the range of 0.4 to 0.7 per year, fishing mortality (F) in the range of 0.2 to 1.5 per year, total mortality (Z) in the range of 0.7 to 2 per year and exploitation coefficient in the range of 0.3 to 0.7 per year (John and Reddy, 1989; Kaymaram et al. 2000; Prathibha et al. 2012; Ramalingam et al. 2012; Kaymaram et al. 2014; Nurdin et al. 2016; Haruna et al. 2018; Hashemi et al. 2020). This study affirms to past considers on *T. albacares* in the region (Kaymaram et al. 2014; Hashemi et al. 2020) which shown overfishing status. According to Froese & Pauly (2022), maximum

lifespan of *T. albacares* was estimated around five years old using a mathematical formula ($t_{max}=t_0+3/K$). Based on American Fisheries Society (AFS) and comparing our findings with their standards (Cheung *et al.*, 2004), extinction vulnerability of this species was estimated to be high.

The Yellowfin tuna fish have been evaluated overfishing and overfished in the Indian Ocean with Maximum Sustainable Yield (MSY), 403(339-436) thousand ton, $B_{MSY}= 1069(789-1387)$ thousand ton, $F_{MSY}=0.15$ (0.13–0.17), $F/F_{MSY}= 1.20(1.00–1.71)$, $B/B_{MSY}= 0.83(0.74–0.97)$, $B/B_v= B_0= 0.30(0.27–0.33)$ (IOTC 2020). The main factors that impact pressure on fish populations are the amount of fish caught and the environment, which affects their ability to survive and find food and resources (Mateus & Estupinan 2002).

Length-based indicators (LBI) and Length-based Spawning Potential Ratio (LBSPR): The L_{mean}/L_{opt} index shows presence of overfishing with values less than 1, and also $L_{mean}/L_{F=M}$ index shows values less than 1 and P_{mega} less than 0.1 is calculated which indicated undesirable condition. The desired range for the L_{mean}/L_{opt} and $L_{mean}/L_{F=M}$ indexes is close to 1 and

P_{mega} is around 0.3-0.4 (Cousido-Rocha et al. 2022). Furthermore, nearly 42% of the individuals of this species had a length below of length at maturity (L_{mat}), which is concerning.

The LBSPR rate of this species is 0.1 (% 10), and LBSPR provides estimates of the spawning potential ratio (SPR). If this index value is below 0.2 ($\approx 0.5 B/B_{\text{MSY}}$), it means the stock is depleted. If the value is above 0.4 ($\approx 1.0 B/B_{\text{MSY}}$), it means the stock is in good condition. In conclusion, the LBSPR model is a useful tool for measuring the size of fish stocks with limited data (Hordyk et al. 2015). In simple words, scientists have come up with ways to easily and cheaply measure the size and characteristics of an exploited stock. One example is the length-based spawning potential ratio method (Hordyk et al. 2015)

Management and exploitation of this species in the Oman Sea: This parameter helps manage for fisheries management, protect the population of yellowfin tuna in the northern waters of the Oman Sea. Overfishing can happen when decrease of the average length and LBSPR index and increase of fishing and total mortality. This study found that the yellowfin tuna population has reached 'overfished' status, which is not good. It is suggested to create clear instructions for exploitation and management of *T. albacares* in the region. The findings of this study can assist management and sustainable harvest of this species stocks.

ACKNOWLEDGMENTS

We would like to thank, management of the Iranian Fisheries Science Research Institute (IFSRI) and also very grateful the experts of the Offshore Fisheries Research Center (OFRC, Chabahar), for helping the project work.

REFERENCES

Bartulovic, V.; Glamuzina, B.; Conides, A.; Dulcic, J.; Lucic, D.; Njire, J. & Kozul, V. 2004. Age, Growth, Mortality and Sex Ratio of Sand Smelt, *Atherinaboyeri*, Risso, 1810 (Pisces: Atherinidae) in the Estuary of the Mala Neretva River (Middle-Eastern Adriatic, Croatia). *Journal of Applied Ichthyology* 20(1): 427-430.

Beverton, R.J.H. & Holt, S.J. 1957. On the Dynamics of Exploited Fish Populations. Ministry of Agriculture, Fisheries and food, London (republished by Chapman and Hall, 1993).

Biswas, S.P. 1993. Manuel of methods in fish biology, fish biology & Ecology laboratory, Dibrugarh University, Dibrugarh. 157 p.

Carruthers, T.R. & Hordyk, A. R. 2018. The Data-Limited Methods Toolkit (DLM tool): An R package for informing management of data-limited populations. *Methods in Ecology and Evolution* 9(12): 2388-2395.

Chantawong, P. 1998. Tuna fisheries in the East Indian Ocean, 1993-1998. Working paper TWS/98/1/9 presented to 7th Expert Consultation on Indian Ocean Tunas, 9-14 November, Victoria, Seychelles.

Cheung, W.; Pitcher, T. & Pauly, D. 2004. A fuzzy logic expert system to estimate intrinsic extinction vulnerabilities of marine fishes to fishing. *Biological Conservation* 124(97-111).

Collette, B.B. & Nauen, C.E. 1983. FAO species catalogue. Vol. 2. Scombrids of the world. An annotated and illustrated catalogue of tuna, mackerel's bonitos and related species known to date. FAO Fish. Synop., (125) Vol. 2:137 p.

Cope, J.M. & Punt, A.E. 2009. Length-Based Reference Points for Data-Limited Situations: Applications and Restrictions. *Marine and Coastal Fisheries: Dynamics, Management, and Ecosystem Science* 1: 169-186.

Cousido-Rocha, M.; Cerviño, S.; Alonso-Fernández, A.; Gil, J.; GonzálezHerraiz, I.; Rincón, M.; Ramos, F.; Rodríguez-Cabello, C.; Sampedro, P.; Vila, P. & Grazia Pennino, P. 2022. Applying length-based assessment methods to fishery resources in the Bay of Biscay and Iberian Coast ecoregion: Stock status and parameter sensitivity. *Fisheries Research* 248(1): 1-15.

FAO. 2019. FAO Yearbook. Rome: Fishery and Aquaculture Statistics, 20 p.

FAO. 2022. The State of World Fisheries and Aquaculture 2022. Towards Blue Transformation. Rome, FAO.

Froese, R. & Binohlan, C. 2000. Empirical relationships to estimate asymptotic length, length at first maturity and length at maximum yield per recruit in fishes, with a simple method to evaluate length frequency data. *Journal of Fish Biology* 56(4): 758-773.

Froese, R. & Pauly, D. eds., 2022. FishBase. World Wide Web electronic publication. www.fishbase.org, version. (10/2022), accessed at www.fishbase.org in

- November/December 2022.
- Froese, R.; Winker, H.; Gascuel, D.; Sumaila, U. R.; & Pauly, D. 2016. Minimizing the impact of fishing. *Fish and Fisheries* 17(3): 785-802.
- Haruna, A.; Mallawa, A.; Musbir, M. & Zainuddin, M. 2018. Population dynamic indicator of the Yellowfin tuna *Thunnus albacares* and its stock condition in the Banda Sea, Indonesia. *AACL Bioflux* 11(4), 1323-1333.
- Hashemi, S.; Doustdar, M.; Ghasemzade, J. & Gholampour, A. 2021. Length-based fishery status of skipjack tuna, *Katsuwonus pelamis* (Linnaeus, 1758) (Teleostei: Scombridae: Scombrinae) in the northern waters of the Oman Sea (Iran). *Iranian Journal of Ichthyology* 8(3) : 160-169.
- Hashemi, S.A.R. & Doustdar, M. 2022. Stock Assessment of Indo-Pacific King Mackerel, *Scomberomorus guttatus* (Bloch & Schneider, 1801) in the Persian Gulf and Oman Sea, southern Iranian waters, using CMSY and DBSRA. *International Journal of Aquatic Biology* 10(1): 12-20.
- Hashemi, S.A.R.; Doustdar, M. & MohebiDerakhsh, P. 2022. Stock assessment of Yellowfin tuna, *Thunnus albacares* (Bonnaterre, 1788) using the LBB and LB-SPR methods in the northern Oman Sea, Iran. *International Journal of Aquatic Biology* 11(4): 313-320.
- Hashemi, S.A.R.; Doustdar, M.; Gholampour, A. & Khanehzaei, M. 2020. Length-based fishery status of yellowfin tuna (*Thunnus albacares* Bonnaterre, 1788) in the northern waters of the Oman Sea. *Iranian Journal of Fisheries Sciences* 19(6): 2790-2803.
- Hordyk, A.; Ono, K.; Valencia, S.; Loneragan, N. & Prince, J. 2015. A novel length-based empirical estimation method of spawning potential ratio (SPR), and tests of its performance, for small-scale, data-poor fisheries. *ICES Journal of Marine Science* 72: 217-231.
- IFO. 2019. Iran Fisheries Organization (IFO). Bureau of Statistics; Yearbook of Fisheries Statistics. 25 p.
- IOTC, 2020. Report of the 24th Session of the Indian Ocean Tuna Commission. IOTC-2020-SC23-R[E], 55 p.
- Jenning, S.; Kasier, M. & Reynold, J. 2000. *Marine Fisheries Ecology*. Black well Science. 391 p.
- John, M.E. & Reddy, K.S.N. 1989. Some considerations on the population dynamics of yellowfin tuna, *Thunnus albacares* (Bonnaterre) in Indian Seas. *Studies on fish stock assessment in Indian waters*. Foreign Service Institute Special Publication 2: 33- 54.
- Kaymaram, F.; Emadi, H. & Kiabi, B. 2000. 2nd IOTC proceedings, Victoria, pp. 23-27 September, Seychelles pp. 283-285.
- Kaymaram, F.; Hosseini, A.; Darvishi, M. & Talebzadeh, A. 2009. Report on the Study of Population Changes of large pelagic fish (yellowfin tuna, skipjack tuna, longtail tuna, narrow-barred Spanish mackerel, etc.) for optimal harvesting of resources in the Persian Gulf and Oman Sea. Iranian Fisheries Science and Research Institute in collaboration with Chabahar Offshore Fisheries Research Center and Persian Gulf and Oman Sea Ecological Research Institute, 126 p.
- Kaymaram, F.; Hosseini, S.A. & Darvishi, M. 2014. Estimates of Length-Based Population Parameters of yellowfin tuna (*Thunnus albacares*) in the Oman Sea. *Turkish Journal of Fisheries and Aquatic Sciences* 14(1): 101-111.
- King, M.G. 2007. *Fisheries biology assessment and management*. Second edition published by Blackwell Publishing Ltd., ISBN. 978-1-4051-5831-2, pp. 189-194.
- Lalèyè, P.A. 2006. Length-weight and length-length relationships of fish from the Ouémé River in Bénin (West Africa). *Journal of Applied Ichthyology* 22(4): 330-333.
- Maldeniya, R. & Joseph, L. 1986. On the distribution and biology of yellowfin tuna from the western and southern coastal waters of Sri Lanka. *Collective Volume of working documents presented at the Expert Consultation on Stock Assessment of Tunas in the Indian Ocean, held in Colombo, Sri Lanka: 28 Nov.-2 Dec. 1985*. 51-61.
- Mallawa, A.; Amir, F.; Musbir, A. & Susianti W. 2015. Assessment of *Katsuwonus pelamis* conditions in Flores Sea waters, South Sulawesi. *Proceedings of the National Symposium on Marine and Fisheries II*, pp. 299-307, Hasanuddin University Press, 513 p. [In Indonesian].
- Mateus, A. & Estupina, B. 2002. Fish stock assessment of *Piraputanga* (*Brycon microlepis*) in the Cuiaba Basin. *Brazilian Journal of Biology* 62: 165-170.
- Mildenberger, T. K.; Taylor, M. H. & Wolff, M. 2017. TropFishR: An R package for fisheries analysis with length-frequency data. *Methods in Ecology and Evolution*, 8: 1520-1527.

- Nuridin, E.; Sondita, M. F. A.; Yusfiandayani, R. & Baskoro, M. S. 2016. Growth and mortality parameters of yellowfin tuna (*Thunnus albacares*) in Palabuhanratu waters, west Java (eastern Indian Ocean). *AACL Bioflux* 9(3): 741-747.
- Pillai, P.P.; Pillai, N.G.; Muthiah, C.; Yohannan. T.M.; Mohamad kasim, H.; Gopakumar, G.; SaidKoya, K.P.; Manojkumar, M.; Sivads, M.; Nasser, A.K.V.; Ganga, U.; Dhokia, H.K.; Kemparaju, S.; Bhaskaran, M.N.K.; Elayathu, M. N. K.; Balasubramaniam, T.; Manimaran, C.; Kunhikoya, V.A. & Ajith Kumar, T.T. 2002. Stock assessment of coastal tuna in the Indian seas. In: N.G.K. Pillai, N.G. Menon, P.P. Pillai, and U. Ganga, (Eds.) *Management Scombroids Fisheries*, Central Marine Fishery Research Institute, Kochin.pp. 240-250.
- Prathibha, R.; Syda Rao, G. & Rammohan, K. 2012. Age, growth and population structure of the yellowfin tuna *Thunnus albacares* (Bonnaterre, 1788) exploited along the east coast of India. *Indian Journal of Fisheries* 59(1): 1-6.
- Ramalingam, A.B.; Kar, L.; Govindaraj, K. & Prasad, G.V.A. 2012. Study of the growth and population parameters of yellowfin tuna (*Thunnus albacares*) in the Andaman and Nicobar waters based on the length frequency data. Report of 14th IOTC proceedings. 24–29 October. Mauritius: 17 p.
- Shi, Y.; Zhang, X.; He, Y.; Fan, W. & Tang, F. 2022. Stock Assessment Using Length-Based Bayesian Evaluation Method for Three Small Pelagic Species in the Northwest Pacific Ocean. *Frontiers in Marine Science* 9: 775180.
- Somvanshi, V.S.; Bhargava, A.K.; Gulati, D.K.; Varghese, S. & Varghese, S.P. 2003. Growth parameters estimated for yellowfin tuna occurring in the Indian EEZ. 6th IOTC proceedings. Victoria, 3-12 June, Seychelles, 191-193.
- Sparre, P. & Venema, S. C. 1998. Introduction to tropical fish stock assessment, FAO Fisheries technical paper, Roma, 450 p.
- Tantivala, C. 2000. Some biological study of yellowfin tuna (*Thunnus albacares*) and bigeye tuna (*Thunnus Obesus*) in the eastern Indian Ocean. 2nd IOTC proceedings. Victoria, 23-27 September, Seychelles, pp. 436-440.
- Then, A.Y.; Hoenig, J.M.; Hall, N.G.; Hewitt, D.A. & Handling editor: Ernesto, J. 2015. Evaluating the predictive performance of empirical estimators of natural mortality rate using information on over 200 fish species. *ICES Journal of Marine Science* 72(1): 82-92.
- Vivekanandan, E. 2005. Stock assessment of tropical marine fishes. Indian Council of Agricultural Research, New Delhi, 115 p.
- Zar, J.H. 1996. Biostatistical analysis. 3rd edition. Prentice-Hall Inc., New Jersey, USA. 662 p.
- Zhou, S.; Punt, A. E.; Smith, A. D. M.; Ye, Y.; Haddon, M.; Dichmont, C. M. & Smith, D. C. 2017. An optimized catch-only assessment method for data poor fisheries. *ICES Journal of Marine Science* 75(3): 964-976.

مقاله کامل

تغییرات پارامترهای جمعیتی مبتنی بر طول تون ماهی زردباله (*Thunnus albacares*) (Bonnaterre, 1788) طی دو دوره زمانی در آب‌های شمالی دریای عمان

سید احمد رضا هاشمی^{۱*}، محمد درویشی^۲، مهرزاد کشاورزی فرد^۳، مسطوره دوستدار^۴

^۱مرکز تحقیقات شیلاتی آب‌های دور، موسسه تحقیقات علوم شیلاتی کشور، سازمان تحقیقات، آموزش و ترویج کشاورزی، چابهار، ایران.
^۲پژوهشکده اکولوژی خلیج فارس و دریای عمان، موسسه تحقیقات علوم شیلاتی کشور، سازمان تحقیقات، آموزش و ترویج کشاورزی، بندرعباس، ایران.
^۳پژوهشکده میگو کشور، موسسه تحقیقات علوم شیلاتی کشور، سازمان تحقیقات، آموزش و ترویج کشاورزی، بوشهر، ایران.
^۴موسسه تحقیقات علوم شیلاتی کشور، سازمان تحقیقات، آموزش و ترویج کشاورزی، تهران، ایران.

چکیده: این تحقیق به اطلاعات اولیه در مورد ماهی تون زرد باله (گیدر) در بخش شمالی دریای عمان نگاه داشته و اطلاعات مفیدی در مورد نحوه مدیریت صحیح این ذخیره ارائه می‌دهد. در طول سال‌های این مطالعه (۱۹۹۲ و ۲۰۲۲) بیش از ۶۰۰۰ ماهی اندازه‌گیری شد و میانگین طول (دامنه) ماهی تون زرد باله (گیدر) در سال‌های ۱۹۹۲ و ۲۰۲۲ به ترتیب 93 ± 26 (۱۵۷-۲۱) سانتی‌متر و 77 ± 18 (۱۷۵-۲۴) سانتی‌متر بود. میانگین وزن (دامنه) این گونه به ترتیب 9127 ± 1251 (۳۵۰۰-۵۵۰۰۰) گرم در سال ۱۹۹۲ و 10639 ± 1450 (۸۵۰۰۰-۱۱۰۰۰) گرم در سال ۲۰۲۲ بود. رابطه بین طول چنگال و وزن کل بدن برای سال ۱۹۹۲، $W=0.014 \times L^{2.51}$ ($R^2=0.83$)، و برای سال ۲۰۲۲، $W=0.019 \times L^{2.46}$ ($R^2=0.89$, $N=703$)، به دست آمد. معادله ون برتالانفی برای این گونه در آب‌های شمالی دریای عمان (ایران) در سال‌های ۱۹۹۲ و ۲۰۲۲ به ترتیب به صورت: $Lt=182 (1-\exp(-0.39(t+0.25)))$ و $Lt=177 (1-\exp(0.55-(t+0.18)))$ محاسبه شد. نسبت پتانسیل تخم‌ریزی براساس طول (LBSPR) در سال ۱۹۹۲ و ۲۰۲۲ به ترتیب $0.22(0.20/20-0.20/25)$ و $0.10(0.09-0.12)$ بود. بر اساس نسبت $Lmean < Lopt$ و $Lmean / LF = M$ و $Lmean / Lopt < 1$ ، $P_{\text{mega}} < 0.1$ ، نشان می‌دهد، وضعیت بهره‌برداری از ذخیره در شرایط نامطلوب قرار دارد. کاهش میانگین طول، شاخص LBSPR و افزایش صید و مرگ و میر کل می‌تواند دلیلی برای صید بی‌رویه باشد. مطالعه حاضر نشان داد که ذخیره ماهی تون زرد باله (گیدر) به وضعیت صید بیش از حد رسیده است. یافته‌های این مطالعه می‌تواند به مدیریت و برداشت پایدار ذخایر این گونه کمک کند.

کلمات کلیدی: صید بی‌رویه، نسبت پتانسیل تخم‌ریزی، معادله ون برتالانفی، برداشت پایدار.